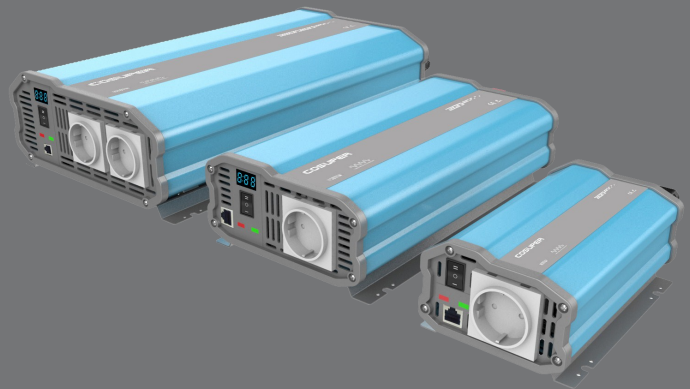
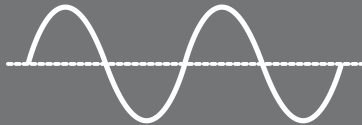


Reliable power supply solution For Automotive/ RV/ Off grid system



With the pure sine wave output, no matter coffee machine, microwave, TV, satellite, printer or other heavy duty equipment, SPH power inverter gives perfect performance of running loads from the household appliances to office devices.

SPH300 and SPH600 models have FCC class A regulation to eliminate interference potential with other devices, while UL 458 standards means SPH series meet strict RV and marine safety standards. This inverter can be easily installed to fit into any compartment.

Product Features

- Regulated by UL458 and CSA C22.2, CE under EN55022:2006+A1:2007 standards
- Pure sine wave output runs all loads from households appliances to office equipment
- Independent heatsink design to decrease temperature of main case
- High overload capacity allows high surge power to operate induction loads
- External LED remote controller with 5 meters remote wire
- 24 months warranty

Protection

- Battery DC over voltage and low voltage protection
- Short circuit protection
- Over temperature protection
- Over load protection

Application



Motorhome



Caravan



Mobile homes



Mobile workshop



Regular vehicle



Off grid solar system

Power Range

150 W

300 W

600 W

800 W

1000 W

1500 W

2000 W

3000 W

COSUPER SUZHOU ENERGY TECHNOLOGY CO.,LTD

#18 Building
No.99, Gangtian Road
Suzhou, Jiangsu Province, China
0086 512 68638910 Phone
0086 512 68638916 Fax

www.cosuper.com

Power input & Output		SPH150	SPH300	SPH600	SPH1000	SPH1500	SPH2000	SPH3000
Output Power		150W	300W	600W	1000W	1500W	2000W	3000W
Surge Power		250W	600W	1200W	2000W	3000W	4000W	6000W
Idle power		2W	3W	3W	9W	9.5W	12W	15W
DC Input Voltage		12 VDC			12, 24 or 48 VDC			
DC Input Regulation		10.5-15 VDC (×2 for 24 VDC; ×4 for 48 VDC)						
Output Voltage		100/ 110/ 120VAC +/- 3%; 220/ 230/ 240VAC +/- 5%						
Output Frequency		50/60Hz +/- 0.05%						
Output Waveform		True sine wave (THD<3%)						
Power Factor		0.8-1						
Efficiency	110V	88%	88%	90%	92%	92%	93%	92%
	230V	89%	89%	92%	93%	93%	93%	93%
Control & Signal indicates								
Fault Indication		Red LED light and buzz alarm						
Work Indication		Green LED light						
Remote Control		CR10 or CR11(work with DBS battery isolator)						
Battery type		AGM, Seal lead acid, Gel, Open lead acid, LiFeO4						
Protection		Overload, Over / under input voltage, Over temperature, Short circuit,						
Safety		AS/NZS 4763:2011, UL458, LVD(EN60950)						
General parameter								
Operating Temp		-5~40℃						
Working Humidity		20~90% RH						
Storage Temp		-30~70℃						
Cooling		Automatic temp-control fans						
Weight (kg)		0.5	1	1.5	2.9	3.2	4.3	5.5
Size (mm)		120*96.5*55	157*200*79	150*237*79	170*265*96	170*351*96	242*463*118	242*463*118

*Specifications are subject to change without notice